

# Fiery Scan™

**Fiery Scan Remote, Scan from LCD, Scan & Distribute via Email, FTP, & Internet FAX - Demo Script**

## Feature Overview

Fiery Scan incorporates the Fiery® controller as a key element of network and distribution scanning. Scans can be initiated remotely or at the Fiery, and stored on the Fiery's hard drive. The user can then distribute the scans via email to any email account around the world, download the file directly to the Fiery Hold queue to build documents, or save the scanned file directly to the PC. Scans can also be retrieved via the Fiery WebTools™ utility, local Fiery interface (FACI), or TWAIN plug-in. The Fiery Scan application consists of two components: a server module that resides on the Fiery and manages scans on the Fiery, and a TWAIN plug-in module (Fiery Remote Scan) for use with compatible applications to allow remote retrieval of scan files from the Fiery for distribution or acquisition.

## Objective

- Initiate a scan from LCD and FACI Kit Fiery Bar
- Acquire and send scanned jobs to a mailbox using the Fiery Remote Scan Twain plug-in
- Distribute scanned job via email
- Retrieve scanned jobs using remote WebScan utility
- Send scanned jobs to a Hold queue to merge and edit using Fiery Command WorkStation™
- Set up Fiery WebTools for email services and mailboxes
- Set up email services from the FACI Kit Fiery Bar

## Materials and Equipment

- Fiery Command WorkStation 4.0
- Adobe PhotoShop 6.0 minimum
- Adobe Acrobat 4.05 minimum
- PDF documents: scandemo.pdf or other PDF jobs
- PC workstation with Windows 2000 or XP operating system


## Preparation

- Launch installed EFI Command WorkStation 4.0 application. Go to [Start], [Programs], [Fiery] and select [Command WorkStation 4].
- Launch Adobe PhotoShop
- Log in to at least two servers
- Import scandemo.pdf or any PDF job to the Active Jobs queue and mailbox

## Benefits

Users can access the Fiery Scan utility locally from either the LCD or FACI Kit Fiery Bar user interface and scan directly at the server's location. Using the Fiery Scan application the user can scan multiple color images using the automatic document feeder (ADF) and manage the electronic document.

Using the Scan to Email function, a color document can be scanned and then e-mailed as an attachment (or a URL pointing to the image) directly from the Fiery. It's ideal for corporate and graphic environments needing to distribute scanned hard copy originals all over the world, thus saving money on delivery charges or phone bills due to faxing.



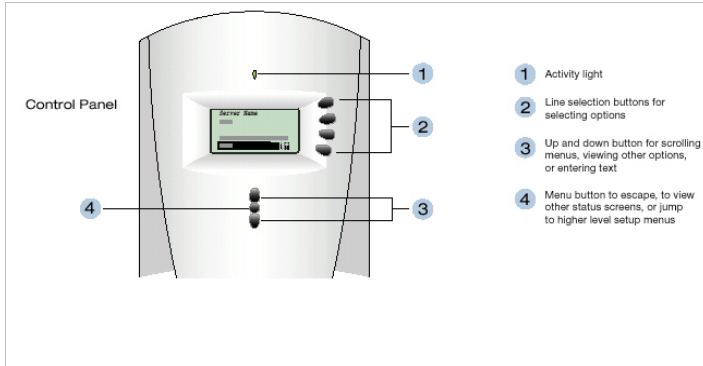
The Scan and Send to Mailbox feature enables users to save scanned files in up to 10,000 possible mailboxes on a hard disk drive. It's an ideal way for all levels of users to easily retrieve jobs using WebScan or Fiery Remote Scan.

The Fiery Remote Scan tool acquires scanned jobs directly from TWAIN Plug In-supported software like Adobe PhotoShop or Acrobat. It enables users to distribute attachments or URLs to email and send jobs to PhotoShop, the Fiery Hold Queue, and mailboxes.

Fiery WebTools is an easy way for users to remotely access and control print jobs. Within Fiery WebTools, WebScan enables users to save scanned jobs to any network location, or to retrieve the entire job or a specific page.

## Demonstration: Scan from Fiery LCD

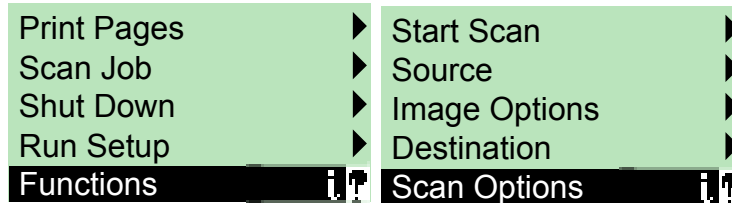
### Step 1



In this exercise, you will learn how to send a scan job to the mailbox from the Fiery LCD control panel.

1. From the Fiery Control Panel press menu button **4**.
2. The LCD display will advance to the first screen shown in Step 2.

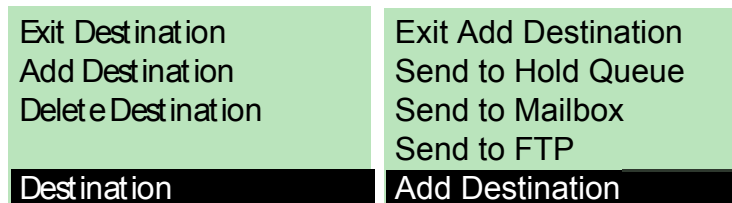
### Step 2



1. Place the **demoscans** documents in the Automatic Document Feeder (ADF) located on top of your copier.
2. Select **Scan Job** from the Functions screen in the Fiery LCD display by using the up or down line selection buttons.
3. In the following Scan Options screen, press the **Destination** line button.

You can replace the above highlighted documents with any scan job.

### Step 3



1. Press the **Add Destination** line button in the following Destination screen.
2. In the following Add Destination screen, press **Send to Mailbox** line button.

#### Step 4

Select Mailbox  
0001  
>  
<  
OK  
Send to Mailbox

Set File Format  
PDF  
OK  
Send to Mailbox

1. Enter Mailbox number: **0001** in the Send to Mailbox screen. Use the two scroll buttons indicated by arrows to enter the value. Then press the OK line button.
2. In the following Send to Mailbox screen, under **Set File Format**: enter **PDF** and then select OK.

You can replace the information highlighted above with any mailbox number or file format available.

#### Step 5

Exit Add Destination ▶  
Send to Email ▶  
Send to FTP ▶  
Send to Internet Fax ▶  
Add Destination i

Exit Destination  
Add Destination  
Delete Destination  
Destination

1. In the Add Destination screen, select the **Send to Mailbox** line button then select the **Exit Add Destination** line button.
2. In the following Destination screen, press **Exit Destination** line button.

#### Step 6

Start Scan ▶  
Source ▶  
Image Options ▶  
Destination ▶  
Scan Options i

File Name  
scandemo  
<  
>  
OK  
Destination

Print Pages ▶  
Scan Job ▶  
Shut Down ▶  
Run Setup ▶  
Functions i

1. Select the **Start Scan** line button from the Scan Options screen.
2. In the following Destination screen, under File Name enter **scandemo**. Then press the OK line button.
3. In the Functions screen, choose the line button next to **Scan Job** to begin scanning your document.

You have just sent your scan jobs to the designated mailbox 0001. To learn how to retrieve from mailboxes, see WebScan demo or Photoshop Remote Fiery Scan demo. The LCD screens may vary depending on the engine connected.

## FACI Kit Fiery Bar

### Step 1

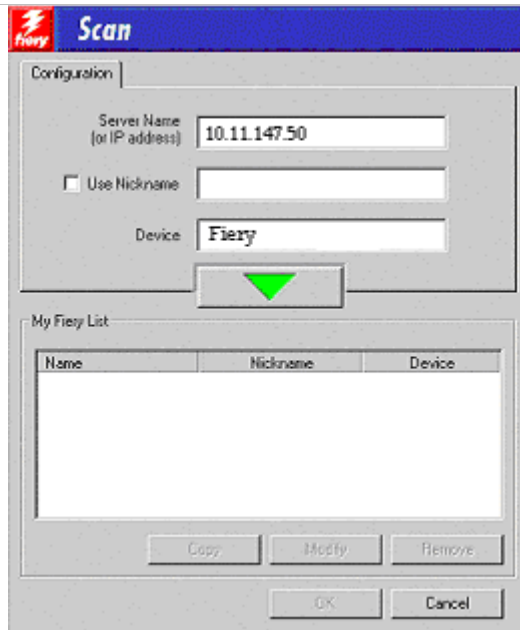


In this exercise, you will learn how to launch and access Scan from the FACI Kit Fiery Bar.

1. Begin by placing the **Scandemo** document in the automatic document feeder.
2. With your mouse positioned on the **Fiery Bar**, perform a right click.
3. From the drop down menu that appears, select **Scan**.

You can replace the Scandemo document in the ADF with any other document that is convenient for you.

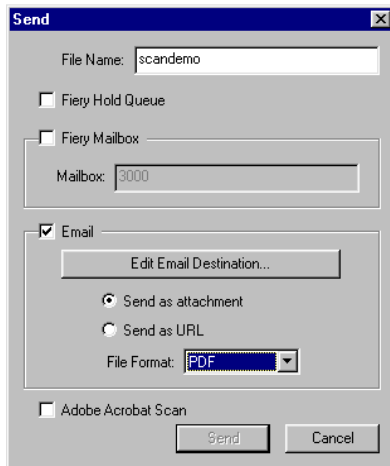
### Step 2



1. In the Fiery Scan window, next to Server Name, enter the **Fiery** name or its **IP address**.
2. Enter Device: **Fiery**
3. Click on the green down arrow to add the new Fiery to **My Fiery List** shown at the bottom of the window.
4. Highlight the 10.11.147.50 server displayed under **My Fiery List** and press the OK at the bottom of the window.

You can select another Server Name and Device by replacing the highlighted information above.

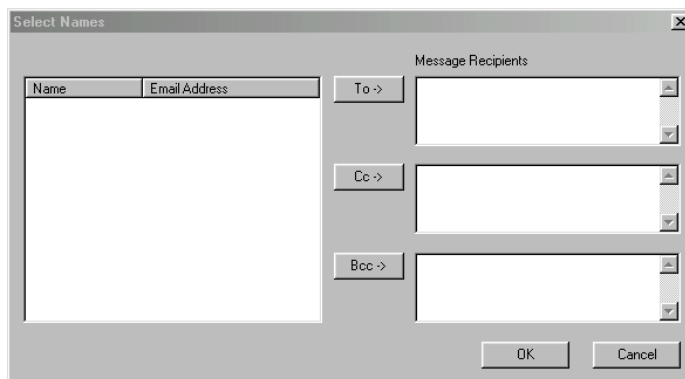
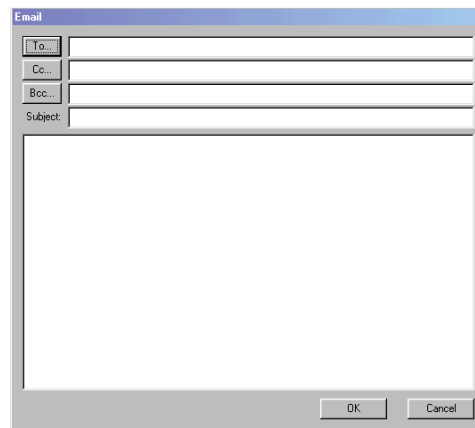
### Step 3



1. Type in **File Name:** **scandemo** or another job name
2. Place a check next to Email.
3. Select the radio button next to **Send as Attachment**.
4. Select **PDF** in the blank next to File Format.

You can replace the highlighted items with another file name or select any file format available.

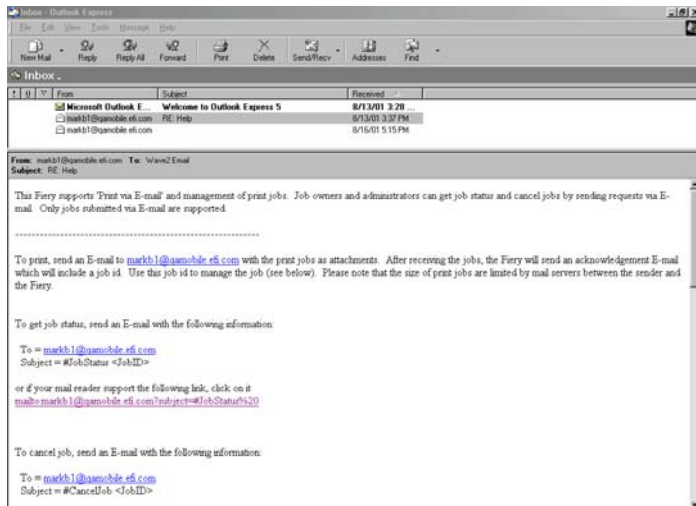
### Step 4



1. Select **Edit Email Destination** button to specify email address
2. Enter email address or click **To** button to select from address book. For demo, please enter: **markb3@qamobile.efi.com**
3. Double click on **To** to access the email address book
4. Select Name and Enter **OK**  
Example: **markb1@qamobile.efi.com**
5. Enter Subject: **#Help**
6. Type: **Testing Fiery Remote Scan email**
7. Enter **OK**. This will close the Email screen.
8. Enter **Send** when in the Send screen

Email addresses must be set up prior to a demo. Check with your network administrator for Email setup.

## Step 5

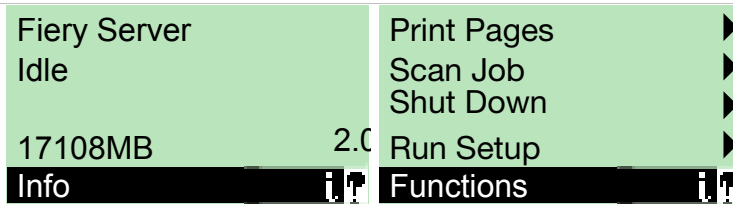


1. Check for [markb1@gamobile.efi.com](mailto:markb1@gamobile.efi.com) 'Re:Help' response email from the Fiery
2. You have just received a list of 'Help' commands that you can use to manage your email jobs
3. Please read and try a few of them out! Example: To cancel a job at the Fiery remotely by email:  
To= [markb1@gamobile.efi.com](mailto:markb1@gamobile.efi.com)  
Subject = #CancelJob <1234>

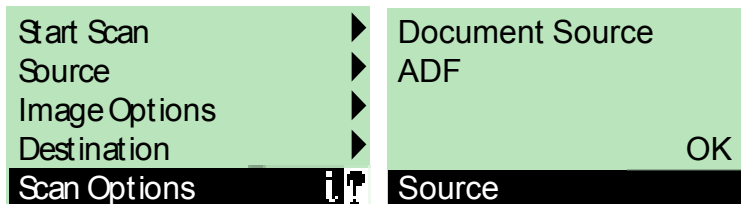


## Scanning to an FTP Server

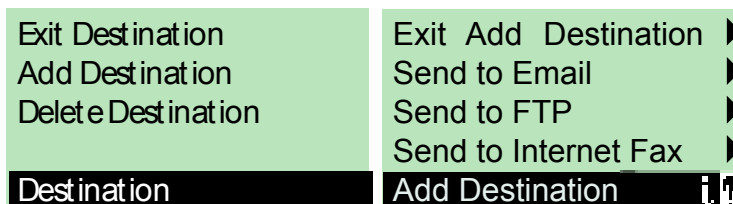
### Step 1



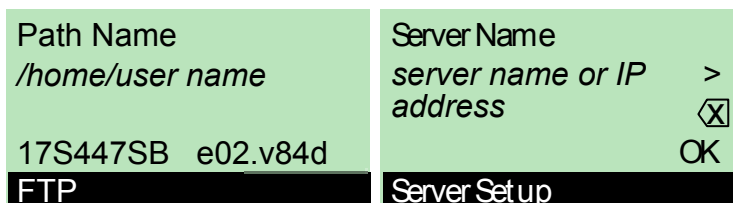
The Fiery server forwards jobs to remote locations using File Transfer Protocol (FTP). The user can set the following parameters for FTP destinations: server name/IP address, directory, port number, time out, user name, password, proxy enable.



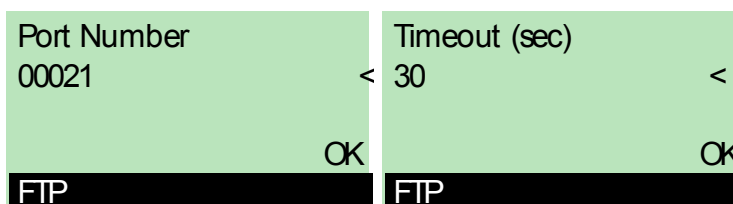
The Fiery server can be enabled to use a proxy server to access the Internet through a firewall. Two FTP proxy protocols are supported: FTP proxy with no proxy authentication and SSL tunneling through HTTP.



1. From the Idle screen on the Fiery server, press the **Menu** button. In the Functions window, press the line button next to **Scan Job**.
2. In the following Scan Options screen, select **Source**. From the Source screen, select **(ADF)** Automatic Document Feeder and select **OK**.
3. In the Destination screen, select **Add Destination**. From the following Add Destination screen select on **Send to FTP**.



4. From next FTP screen, enter the name of **your download folder** under Path Name. Use the scroll line buttons to enter the letters of the server name.



5. Enter FTP **server name or IP address** under the heading **Server Name** in the Server Setup screen.
6. In the FTP screen, enter the FTP **Port Number** and press OK. In the following screen, enter **30 seconds** for the Time out duration.

**Note:** The default port number is 21. If you change the port number, you also need to change the port number setting for the FTP Setup in Network Setup > Service Setup.



## Scanning to an FTP Server (continued)

### Step 2

Use Anonymous Name No < <input checked="" type="checkbox"/> OK FTP	User Name your account name < <input checked="" type="checkbox"/> OK FTP
Enter Password ***** < <input checked="" type="checkbox"/> OK FTP	Set File Format PDF < <input checked="" type="checkbox"/> OK FTP
Print Pages ▶ Scan Job ▶ Shut Down ▶ Run Setup ▶ Functions i	PS Test Page ▶ PCL Test Page ▶ E-mail log ▶ FTP log ▶ Print Pages i

1. Under Use Anonymous Name in the following FTP screen, select **No** and then select **OK**. In the User Name FTP screen enter **your account name** then press **OK**.
2. In the FTP screen with the heading, **Enter Password**, key in a password with the scroll buttons and then press **OK**
3. Under Set File Format in the following FTP screen, choose **PDF** and then select **OK**.
4. To verify that your scan job was sent to an FTP server, from the Idle screen press the Menu button and select **Print Pages** from the Functions screen with the line button.
5. In the Print Pages screen, select the **FTP log** button to send this file to the printer. Retrieve the printed output and confirm that the server name, remote path, and date & time are correct. **This concludes the Scanning to an FTP Server exercise.**

## Sending a Scan Via Internet Fax

### Step 1

Fiery Server Idle 17108MB 2.0 Info i	Print Pages ▶ Scan Job ▶ Shut Down ▶ Run Setup ▶ Functions i
▲ Exit Setup ▶ Server Setup ▶ Network Setup ▶ ▼ Printer Setup ▶ Setup	Exit Network Setup ▶ Port Setup ▶ Protocol Setup ▶ Service Setup ▶ Network Setup

Internet Fax capability uses e-mail conventions to send a scan job via a Fax server to an analog Fax machine. The user experience is similar to sending an e-mail. Underlying technology ensures the scan file is forwarded to the recipient in the proper format.

1. From the Fiery server idle screen, press the **Menu** button. From the Functions screen, choose **Run Setup** and from the next Setup screen select **Network Setup**.
2. In Network Setup screen, choose **Service Setup** and press **OK**.

## Sending a Scan Via Internet Fax (continued)

### Step 1

Exit Service Setup ▶	▲ Web Services Setup ▶
LPD Setup ▶	IPP Setup ▶
Pserver Setup ▶	Port 9100 Setup ▶
Windows Setup ▶	▼ E-mail Setup ▶
Service Setup	Service Setup

Enable E-mail Services <b>Yes</b>	Enable Print via Email <b>Yes</b>
OK	OK
E-mail Setup	E-mail Setup

Outgoing Server 127.0.0.1 >	Incoming Server 127.0.0.1 >
<input checked="" type="checkbox"/> OK	<input checked="" type="checkbox"/> OK
E-mail Setup	E-mail Setup

Server Type POP3	Fiery Email User Name >
OK	<input checked="" type="checkbox"/> OK
E-mail Setup	E-mail Setup

Fiery Email Domain Name > your domain.com	Account Name > your account
OK	<input checked="" type="checkbox"/> OK
E-mail Setup	E-mail Setup

Password ***** >	Administrator Email User Name >
<input checked="" type="checkbox"/> OK	<input checked="" type="checkbox"/> OK
E-mail Setup	E-mail Setup

3. With the Service Setup screen displayed, scroll down the list and select **E-mail Setup** as shown in the second capture.
4. When the E-mail Setup screen appears choose **Yes** to Enable E-mail Services and press **OK**.
5. In the following E-mail Setup screen choose **Yes** to enable Print via E-mail and press **OK**.
6. Under Outgoing Server, enter the **IP address** for your Outgoing Server and press **OK**.
7. Under Incoming Server, enter the **IP address** for your incoming server and press **OK**.
8. In the E-mail Setup screen called Server Type enter the kind of e-mail server that you are using and press **OK**. In the next Fiery Email screen enter the **destination e-mail address** where you want to deliver the Internet Fax.
9. Under Domain Name, enter the **domain name** of your e-mail server and select **OK**.
10. Under Account Name enter **your account name** and select **OK**.
11. Under Password, enter **your password** and press **OK**.
12. Under Administrator E-mail enter the **administrator user name** and press **OK**.

## Sending a Scan Via Internet Fax (continued)

### Step 1

Administrator Email Domain Name qamobile.efi.com <input checked="" type="checkbox"/> <span style="float: right;">OK</span>	Timeout (sec) 30 <span style="float: right;">&lt;</span> <span style="float: right;">OK</span>
E-mail Setup	

Polling Interval (sec) <span style="float: right;">&lt;</span> 15 <span style="float: right;">OK</span>	Max Scan File Size (KB) 1000 <span style="float: right;">OK</span>
E-mail Setup	

Exit Service Setup ▶ LPD Setup ▶ Pserver Setup ▶ Windows Setup ▶ <span style="background-color: black; color: white; text-align: center; padding: 2px;">Service Setup</span>	Exit Network Setup ▶ Port Setup ▶ Protocol Setup ▶ Service Setup ▶ <span style="background-color: black; color: white; text-align: center; padding: 2px;">Network Setup</span>
--	--

Save Changes <span style="background-color: black; color: white; text-align: center; padding: 2px;">Yes</span> <span style="float: right;">OK</span>	▲ Exit Setup ▶ Server Setup ▶ Network Setup ▶ ▼ Printer Setup ▶ <span style="background-color: black; color: white; text-align: center; padding: 2px;">Setup</span>
Network Setup	

### Step 2

Reboot . . .

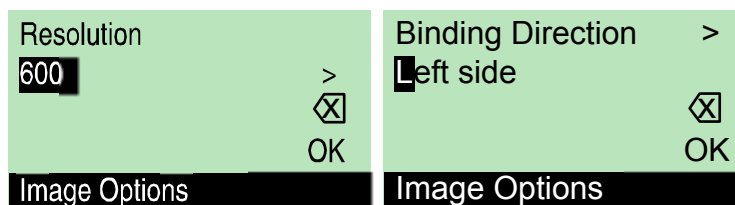
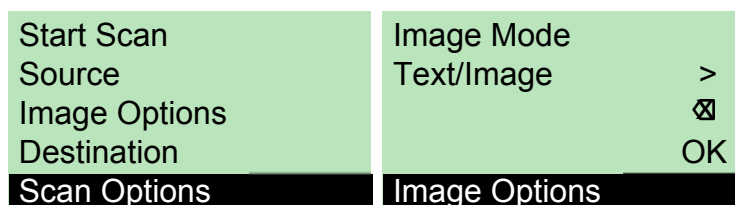
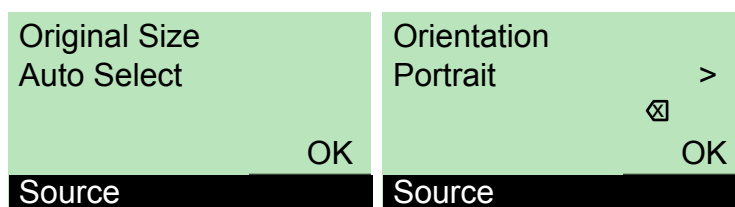
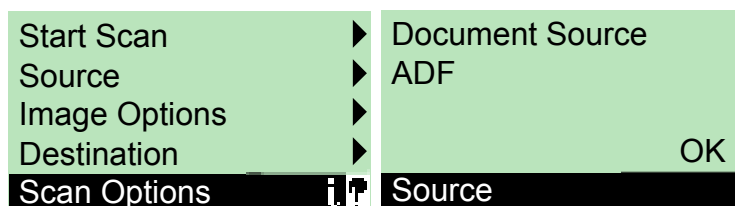
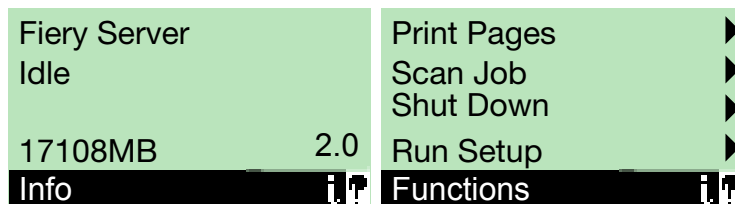
13. Under Administrator E-mail enter the **Domain Name** and press **OK**.
14. Next to Timeout, confirm that the default is set to **30 seconds** and press **OK**.
15. Next to Polling Interval, confirm that the default is set to **15 seconds** and press **OK**.
16. Next to Max Scan File Size, confirm that the default is **1000 KB** and press **OK**. This concludes the entries in the E-mail Setup window.
17. In the following Service Setup screen, choose **Exit Service Setup**. Then choose **Exit Network Setup** in the Network Setup screen.
18. When prompted to Save Changes in the following Service Setup screen, choose **Yes** and enter **OK**.
19. In the Setup screen choose **Exit Setup** and the Fiery will reboot while saving your new entries.

With E-mail Setup configured for your Fiery server, the following procedures use the LCD control panel to configure the Fiery to receive scanned files and send them via Internet Fax to a specified destination.

1. From the **Idle** screen displayed on the front panel of the Fiery server, press the menu button to bring up the **Functions** screen.

## Sending a Scan Via Internet Fax (continued)

### Step 2



2. In the Functions screen, choose **Scan Job** by pressing the line selection button on the right side of the display.
3. In the following Scan Options screen, choose **Source** and in the **Source** screen choose **ADF** (automatic document feeder) or **Platen** depending on which method you prefer to use for scanning your document. Then press the **OK** button.
4. In the Source screen under Original Size confirm that the default is set to **Auto Select** and select **OK**.
5. In the following Source screen under Orientation choose **Portrait** and then select **OK**.
6. In the Scan Options screen choose **Image Options** and from the following Image Options screen choose **Text/Image** and select **OK**.
7. In the Image Options screen under the Resolution heading enter **200** using the scroll line button. Then press **OK**.
8. In the following Image Options screen under Binding Direction select **Left Side** and then press **OK**.

## Sending a Scan Via Internet Fax (continued)

### Step 2

Add Destination Send to Email Send to FTP Send to Internet Fax	Send to FTP Send to Email OK
Destination	Add Destination

Change settings to Send as Fax? Yes	Exit Internet Fax Select Addresses Remove Addresses OK
Internet Fax	Internet Fax

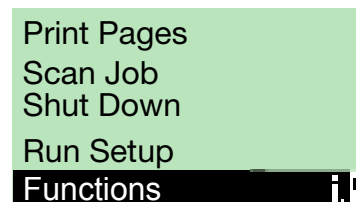
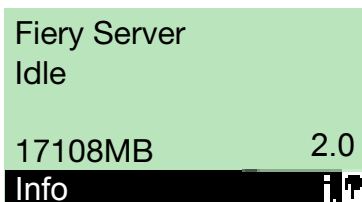
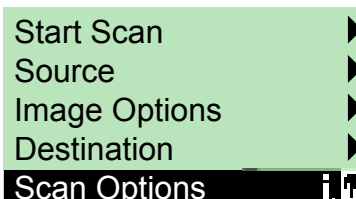
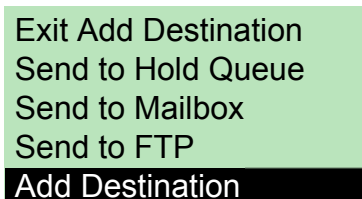
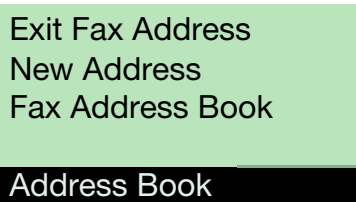
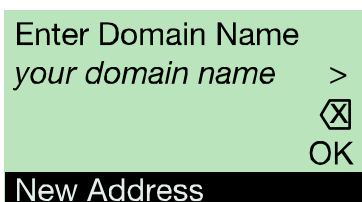
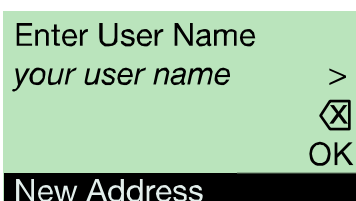
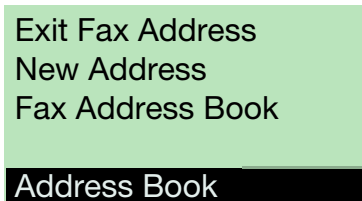
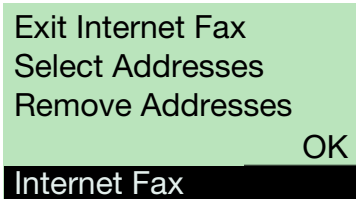
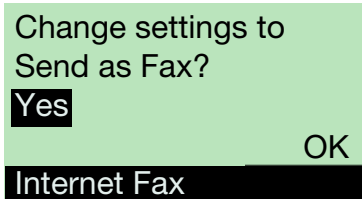
Exit Fax Address New Address Fax Address Book	Enter User Name <i>your user name</i> > OK
Address Book	New Address

Add Destination Send to Email Send to FTP Send to Internet Fax	Send to FTP Send to Email OK
Destination	Add Destination

9. In the Destination screen select the **Add Destination** line button and in the following **Add Destination** screen choose **Send to Internet Fax** and select **OK**.
10. In the Internet Fax screen, reply "Yes" to the heading, Change settings to Send as Fax?
11. From the next Internet Fax screen, choose **Select Addresses** and select **OK**.
12. In the following Address Book screen, choose **New Address** and enter the address to which you want to send your scan job. Or select an address from the **Fax Address Book**.
13. In the New Address screen under the Enter User Name heading, enter *your user name* and press OK.
14. In the Destination screen click on the **Add Destination** line button.
15. In the following **Add Destination** screen choose **Send to E-mail** and then select **OK**.

## Sending a Scan Via Internet Fax (continued)

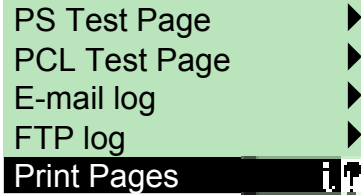
### Step 3



1. In the Internet Fax screen, reply "Yes" to the heading, Change settings to Send as Fax?
2. In the following Internet Fax screen choose **Select Addresses**. Then press **OK**.
3. In the Address Book screen choose **New Address** and then press **OK**.
4. In the following New Address screen under Enter User Name key in **your user name** with the scroll buttons on the right side and then select **OK**.
5. Under Enter Domain Name in the next New Address screen, key in **your domain name** with the scroll buttons and select **OK**.
6. From the Address Book screen, choose **Exit Fax Address** and from the Add Destination screen that appears next, choose **Exit Add Destination**.
7. In the Scan Options screen choose **Start Scan** from the top of the list.
8. From the Fiery Server **Idle** screen, press the menu button to bring up the **Functions** screen.
9. In the Functions Screen, select **Print Pages** using the line selection button on the right side.

## Sending a Scan Via Internet Fax (continued)

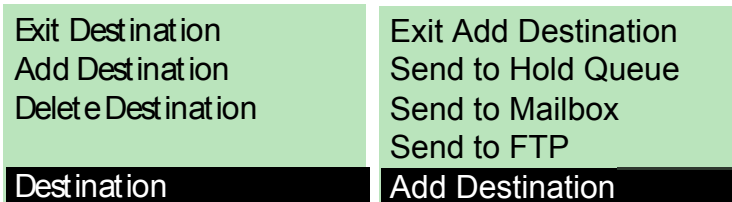
### Step 3



10. In the following Print Pages screen choose **FTP log**. This move will send the FTP log from the Fiery server to the print engine. Retrieve the hard copy from the output tray and verify that your scan was sent via Internet Fax by noting the job name in the log file. **This concludes the Scan Via Internet Fax portion of this demo script.**

## Sending a Scan to the Hold Queue

### Step 1



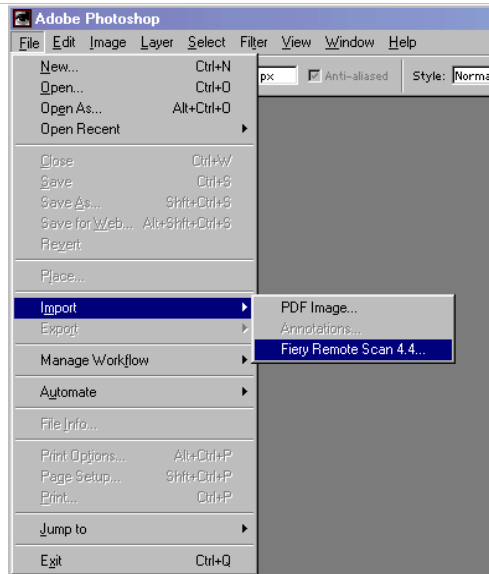
**To send a scan file to the Hold queue of the Fiery server**

1. Select **Add Destination** From the Destination screen
2. In the Add Destination screen select **Send to Hold Queue**.
3. Choose **Yes** if you are sending your scan job to the Fiery server Hold queue.



## Photoshop-Remote Fiery Scan

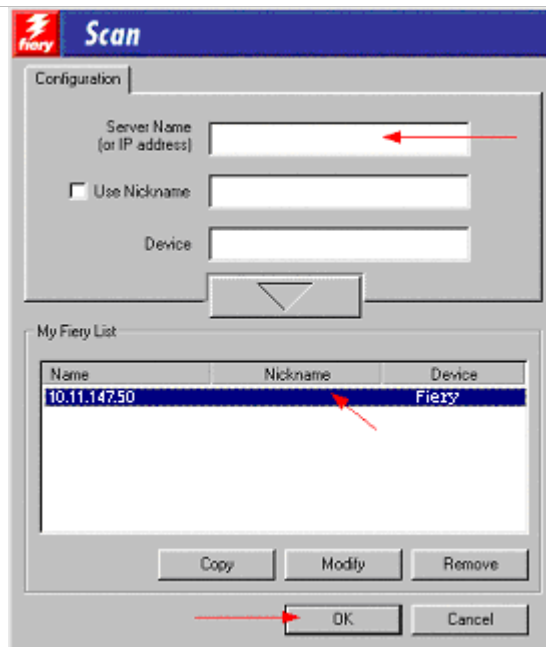
### Step 1



In this exercise, we will launch **Fiery Remote Scan** from **Adobe Photoshop** and retrieve a scan job from the mailbox.

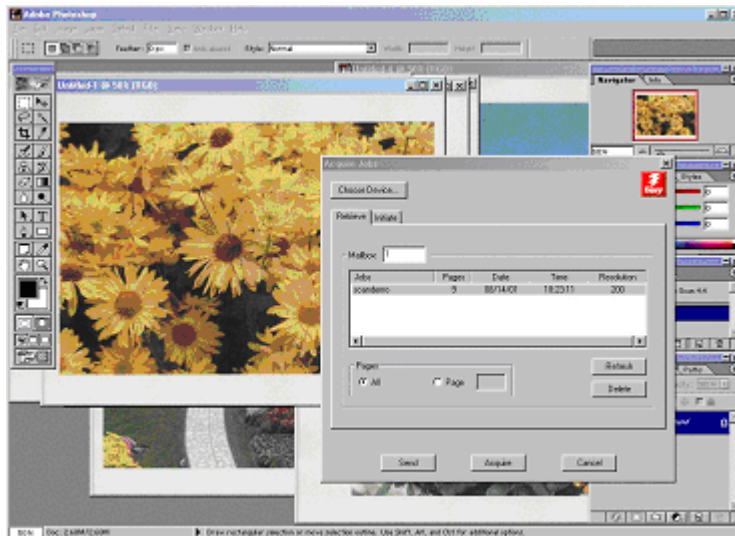
1. Launch **Adobe Photoshop**
2. Select **File, Import** and **Fiery Remote Scan**

### Step 2



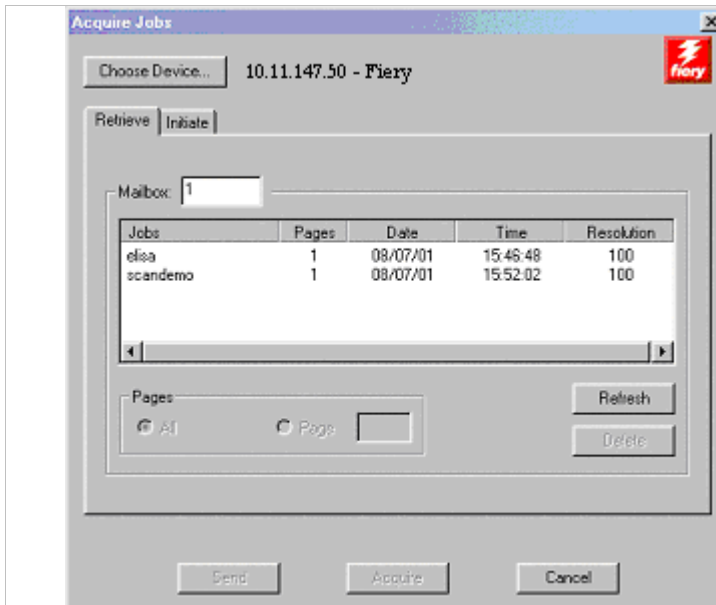
1. Enter **Server Name:** **10.11.147.50**
2. Enter **Device:** **Fiery**
3. Select the green down arrow to add to **My Fiery List**
4. Select the **Fiery** and enter **OK**

### Step 3



1. Choose Device: **Fiery** or by IP address
2. Select **Retrieve** tab from **Acquire Jobs** window

### Step 4

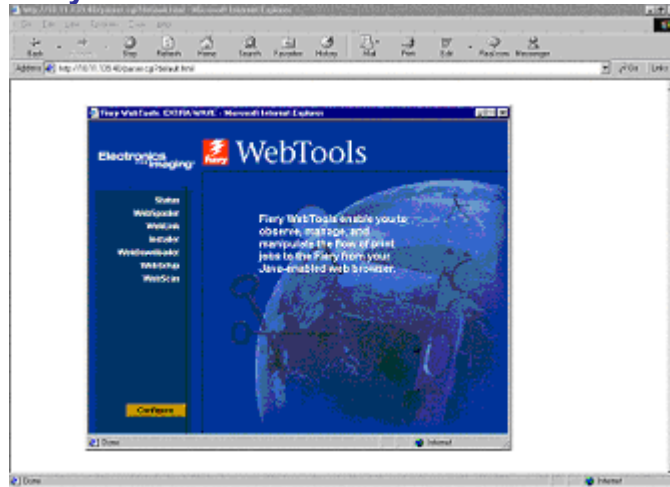


1. To retrieve jobs from the mailboxes, select **Mailbox** and enter '**1**' and select **Refresh**
2. Under **Jobs**, highlight: **scandemo** or jobs
3. Enter **Acquire**

Select **Refresh** to display current jobs in mailboxes as necessary. Remember, when sending and retrieving scan jobs, the mailbox number must match.

## Fiery WebScan

### Step 1



In this exercise, you will learn how to access WebScan from WebTools to retrieve and save scan jobs.

1. Launch Internet Explorer and type in the Fiery server IP address. Enter: **10.11.147.50**. This will launch WebTools.

You can replace the highlighted IP address with any Fiery server IP to access WebScan.

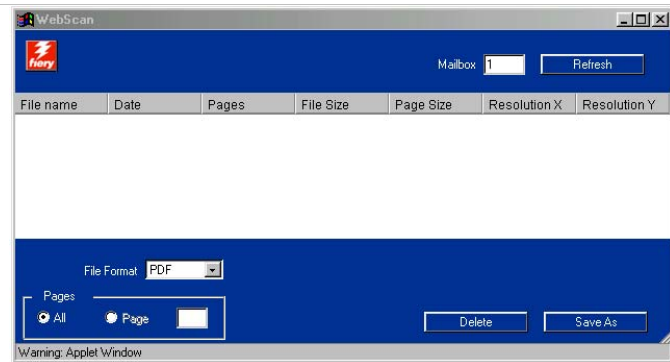
### Step 2



1. From WebTools, select **WebScan**. This will launch the WebScan window.

For remote job management, explore WebTools.

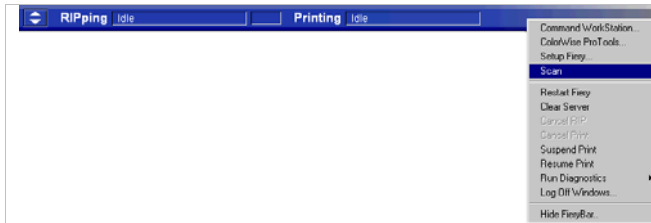
### Step 3



1. Enter Mailbox: **1** or you can select a different Mailbox number
2. Select **Refresh**
3. Highlight the **scandemo.pdf** job to save as a different file format. Select **JPEG** from **file format** pull down menu. Select **All Pages**.
4. Enter **Save As** to your local drive

## Preview & Merge from FACL Kit Fiery Bar

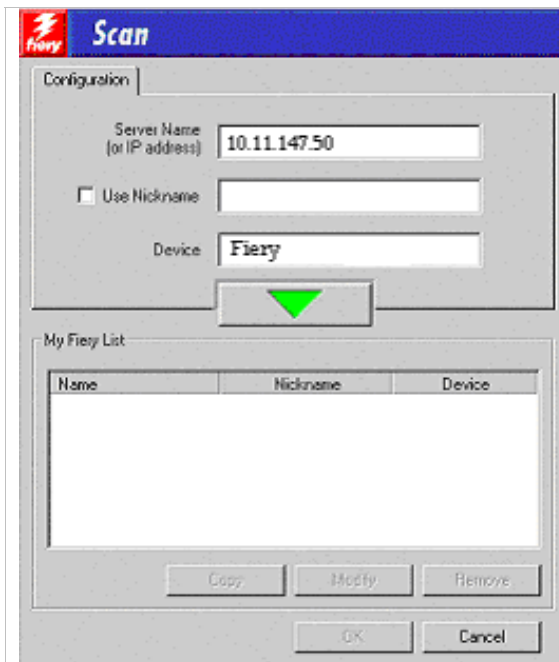
### Step 1



In this exercise, you will learn how to access Scan from the FACL Kit Fiery Bar interface to send scan jobs to hold queue for previewing and merging options.

1. Place **scandemo** jobs in the digital copier ADF
2. Right click on the **Fiery Bar** using your mouse
3. Select **Scan**

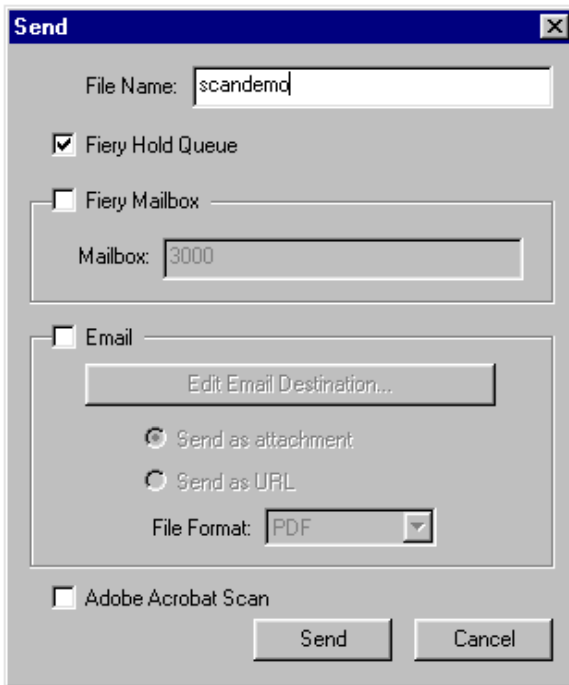
### Step 2



1. Enter server name: **name** or by **IP address**
2. Enter device: **Fiery**
3. Click on green down arrow to add to **My Fiery List**
4. Highlight the **10.11.147.50** server under **My Fiery List**
5. Enter **OK**

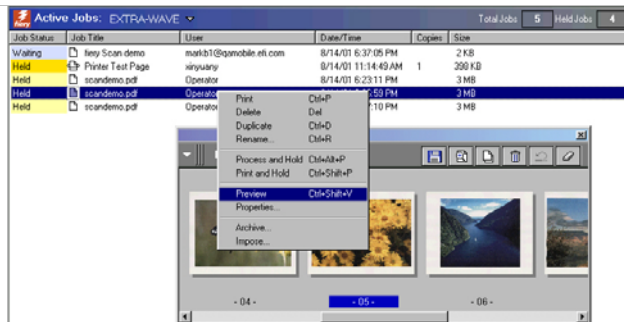
You can select any Server Name and Device by replacing the highlighted information.

### Step 3



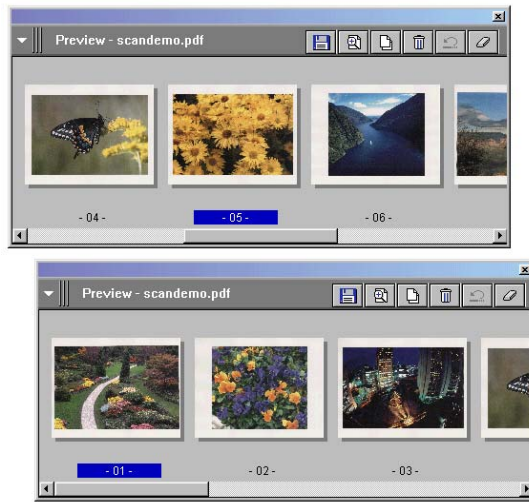
1. Type in file name: **scandemo** or another job name
2. Select the **Fiery Hold Queue** checkbox
3. Enter **Send**. This will send your scan job directly to Command WorkStation Hold queue.

### Step 4



1. From Command WorkStation, highlight **Scandemo.pdf** from **Active Job** and right click for options
2. Select **Duplicate scandemo.pdf**
3. Highlight **scandemo.pdf** again and select **Rename** and enter: dups scandemo.pdf

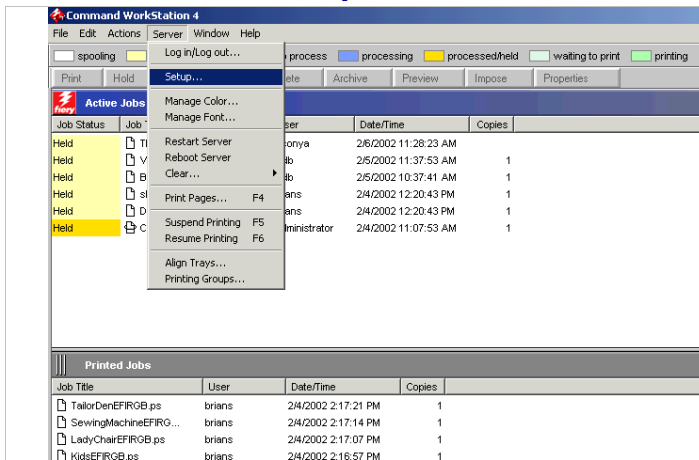
## Step 5



1. Highlight **dupscandemo.pdf** and right click to select **Preview**
2. Highlight **scandemo.pdf** and right click to select **Preview**
3. Move mouse over page 5 of **dupscandemo.pdf** hold and drag page 5 after page 1 of preview **scandemo.pdf**
4. To delete page 3 from **scandemo.pdf** preview, highlight the page and select the trash icon
5. To save merge, close **scandemo.pdf** and select the save disk icon
6. Save the new job name: **mergescandemo.pdf** locally or on the server
7. Close **dupscandemo.pdf** and do not save

## Fiery WebTools Email Setup

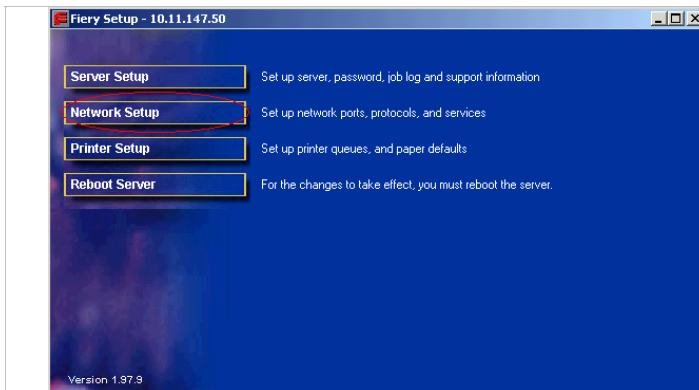
### Step 1



In this exercise, we will set up the mailbox and email services using Fiery WebTools.

1. In Command WorkStation, through the server drop down menu, select **Setup**. This will launch Fiery WebTools.

### Step 2



1. Select **Network Setup** from Fiery WebTools



### Step 3

The screenshot shows the 'WebSetup - 10.11.139.40' window with the 'Service3' tab selected. The 'E-mail Service' section is active, showing the 'E-mail Service Setup' box. The 'Enable Print via E-mail?' checkbox is checked. The 'Incoming Mail Server' is set to '10.11.136.36', 'Server Type' is 'POP3', and 'Outgoing Mail Server' is '10.11.136.36'. The 'Timeout' is '60 Sec', 'Polling Interval' is '15 Sec', and 'Attachment Maximum Size' is '1000'. The 'Mailbox Account Name' is 'markb1', 'Fiery E-mail Address' is 'markb1@qamobile.efi.com', 'Password' is 'ml', 'Verify Password' is 'ml', and 'Administrator E-mail Address' is 'markb3@qamobile.efi.com'. The 'Cancel' and 'Save' buttons are at the bottom right.

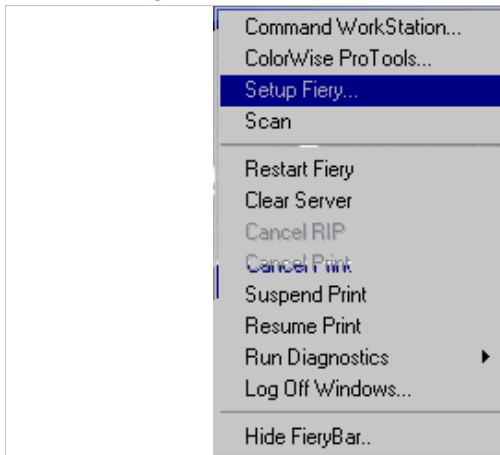
Version 1.97.0  
Electronics for  
Imaging, Inc.  
Copyright(c) 2001  
All rights reserved.

1. Select **Service3** tab to access Email Service
2. Select **E-mail Service Setup** box
3. Select **Enable Print via E-mail?** box
4. Enter the following specifications:
  - Incoming Mail Server: **10.11.136.36**
  - Server Type: **POP3**
  - Outgoing Mail Server: **10.11.136.36**
  - Timeout: **60 sec**
  - Polling Interval: **15 Sec**
  - Attachment Maximum Size: **1000KB**
  - Mailbox Account Name: **markb1**
  - Fiery E-mail Address: **markb1@qamobile.efi.com**
  - Password: **ml**
  - Verify Password: **ml**
  - Administrator E-mail Address: **markb3@qamobile.efi.com**
5. Enter **Save**

You can replace the highlighted information to create your own account.

## Fiery Bar-Setup Fiery

### Step 1

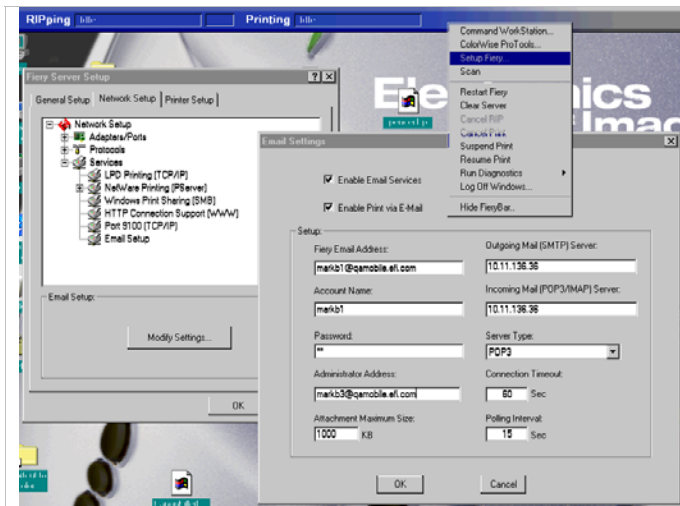


In this exercise, you will learn how to Setup the Fiery to enable email services.

1. Right click on the **FACI Kit Fiery Bar**
2. Select **Setup Fiery** to configure email services

The Fiery Server Setup Window will be launched.

### Step 2



1. Select **General Setup** tab
2. Expand Services box
3. Select **Email Setup**
4. Click on **Modify Settings** button
5. Enter the following information:
  - Fiery Email Address: **markb1@qamobile.efi.com**
  - Account Name: **markb1**
  - Password: **qa**
  - Administrator Address: **markb3@qamobile.efi.com**
  - Attachment Maximum Size: **1000 KB**
  - Outgoing Mail Server: **10.11.136.36**
  - Incoming Mail Server: **10.11.136.36**
  - Server Type: **POP3**
  - Connection Timeout: **60 Sec**
  - Polling Interval: **15 Sec**
6. Enter **OK**